

Vehicle Docking for M700D

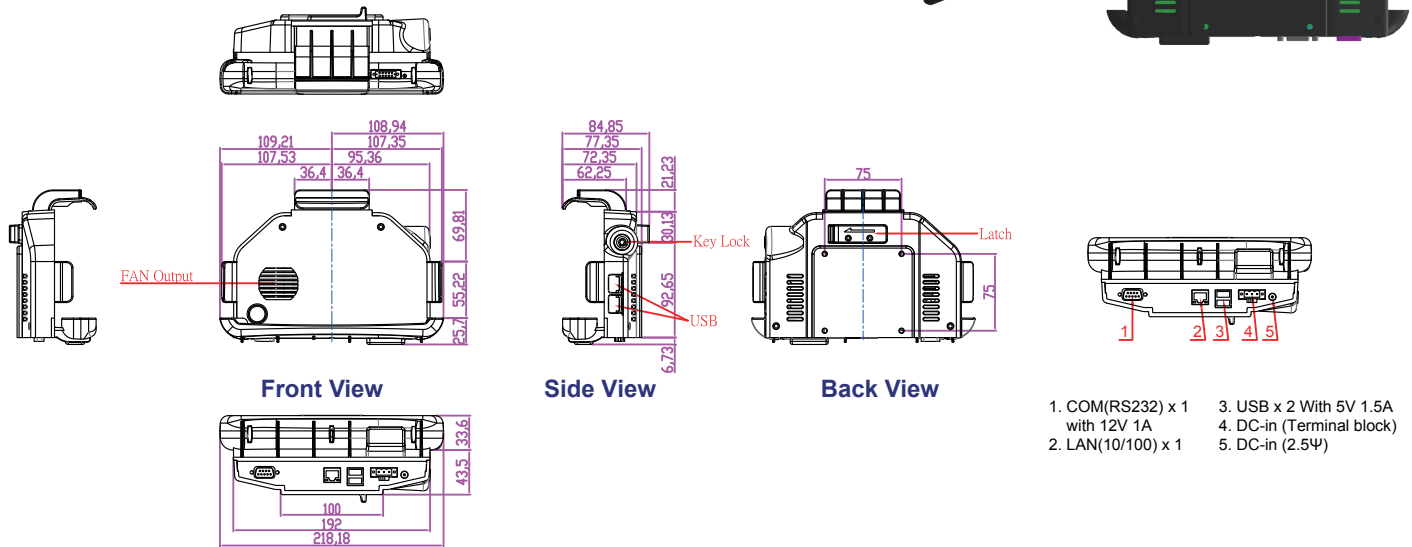
VD-M700D

Product Features:

- Hold the Tablet tightly on the moving vehicle
- Lockable design to avoid Tablet be taken away (with key)
- Support both terminal block & 2.5 ψ power jack input
- 9~36V DC-in wide range DC input
- Bottom I/O supported: USBx2 / LAN / DC-in
- Side I/O Supported : USB x 2
- IP52 design (Rain proof)



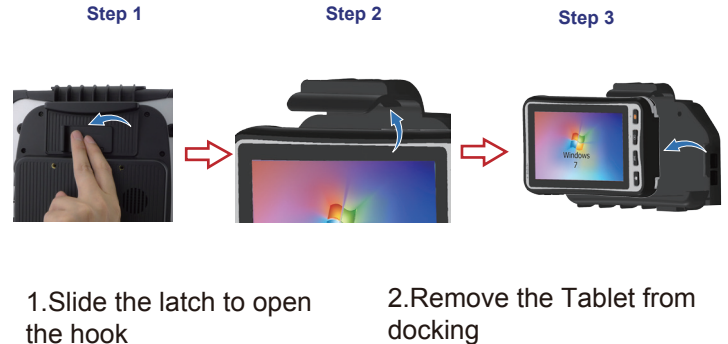
Mechanical Drawing



One hand docking :



One hand undocking :



Specification

Dimension		150.73 x 218.15 x 84.85 mm
Power Input		9~36V DC
I/O Support	Button	COM x1, USB x 2, LAN x1 DC-in (terminal block & 2.5 ψ power jack)
	Side	USB x 2
Mounting		75 x 75mm VESA Holes
Vibration		MIL Std. 810G, 5 ~ 500Hz, 2.24G

Accessories:	
Default	Cigar Head Cable VESA Screw x 6

Rev.	Reasons	Revised Date
1.1	Pic Change	Apr-24-2013
1.2	Spec Change	Nov-19-2013
1.3	Spec Change	Dec-05-2014