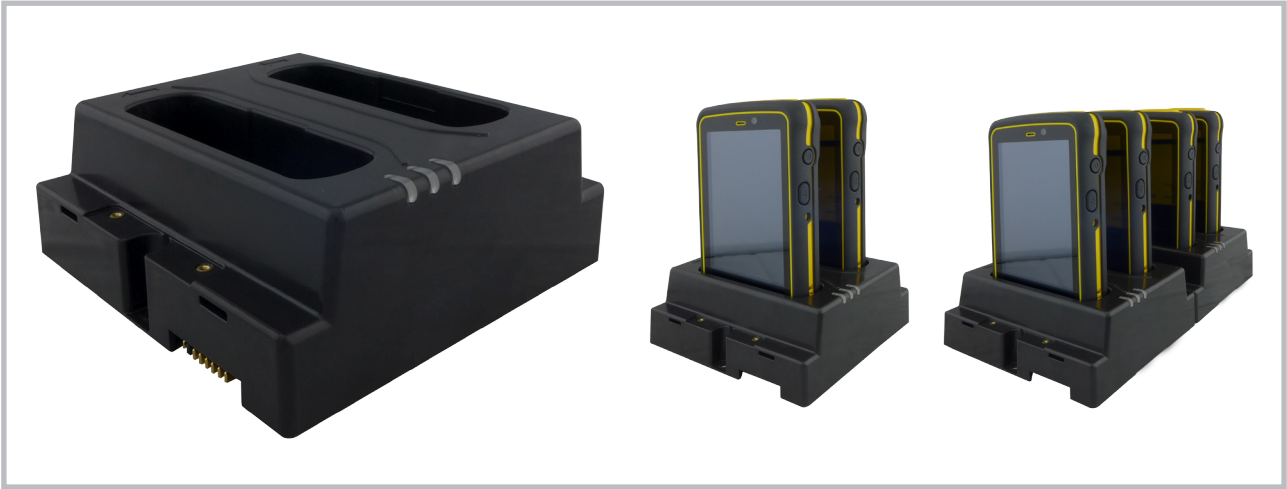


MD-E430R

E430R Series Charging Dock



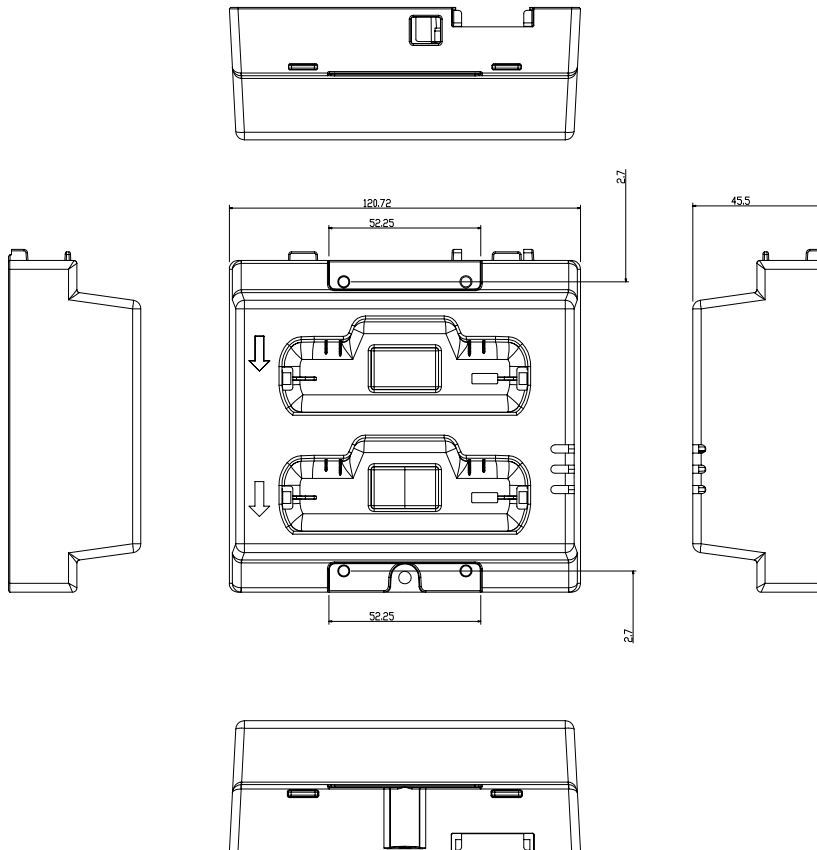
Specification:

MD-E430	
I/O Ports	Remark
1 Charging Slot x 2	PoGo Pin Type
2 LED Light x 3	Show Power level
3 DC in x 1	12V/ 50W DC in



*One 50W DC in adapter can maximum support 2 sets

Mechanical Drawing:



Rev.	Reasons	Revised Date
1.0	First Release	Jun.13.14